



Concrete Masonry
BETTA BLOCK®



**BAINES
MASONRY**
Quality First

Australian Owned, Designed & Manufactured

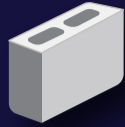
Product Information: Betta Block®

100mm Series

90mm Thick Walls



Hollow - Full Length
390x90x190mm
Code 10-01



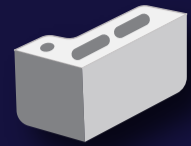
Hollow - three quarter
290x90x190mm
Code 10-02



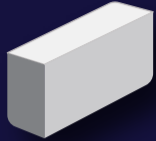
Hollow - half
190x90x190mm
Code 10-03



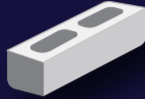
Solid - quarter
90x90x190mm
Code 10-04



Hollow - corner return
390x190(x90)x190mm
Code 10-25



Solid - Full Length
390x90x190mm
Code 10-31

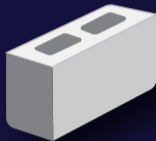


Hollow - half high
390x90x90mm
Code 10-71

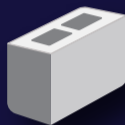
Made with BETTA BLOCK® Technology...
...Stronger, Cleaner & Greener!

150mm Series

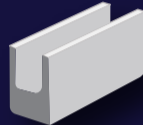
140mm Thick Walls



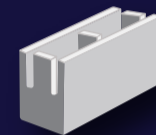
Hollow - Full Length
390x140x190mm
Code 15-01



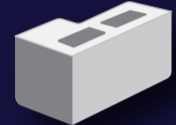
Hollow - three quarter
290x140x190mm
Code 15-02



Lintel
390x140x190mm
Code 15-12



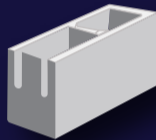
Knock-out bond beam
390x140x190mm
Code 15-20



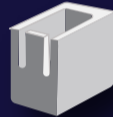
Hollow - corner return
390x190(140)x190mm
Code 15-25



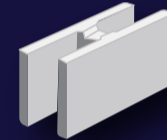
Clean-out Stretcher
390x140x190mm
Code 15-45



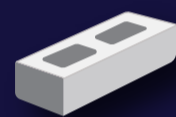
Closed end
390x140x190mm
Code 15-41



Closed end - half
190x140x190mm
Code 15-43



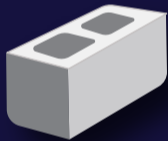
'H' Block
390x140x190mm
Code 15-48



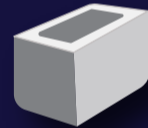
Hollow - half high
390x140x90mm
Code 15-71

200mm Series

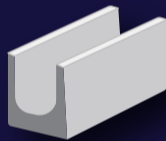
190mm Thick Walls



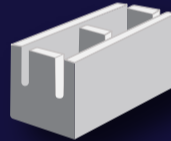
Hollow - Full Length
390x190x190mm
Code 20-01



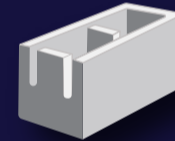
Hollow - three quarter
290x190x190mm
Code 20-02



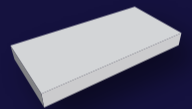
Lintel
390x190x190mm
Code 20-12



Knock-out bond beam
390x190x190mm
Code 20-20



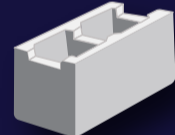
Closed end
390x190x190mm
Code 20-41



195mm Capping Tile
390x195x40mm
Code 50-31



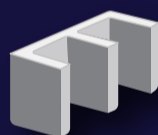
Closed end - half
190x190x190mm
Code 20-43



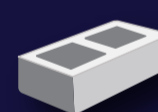
Channel
390x190x190mm
Code 20-42



'H' block
390x190x190mm
Code 20-48



Clean-out stretcher
390x190x190mm
Code 20-45

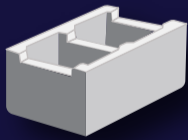


Hollow - half high
390x190x90mm
Code 20-71

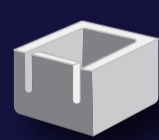


300mm Series

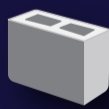
290mm Thick Walls



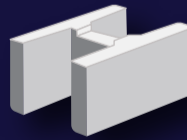
Channel
390x290x190mm
Code 30-42



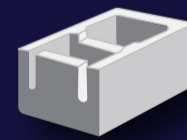
Hollow - half
290x190x190mm
Code 30-43 / 20-02



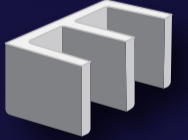
Hollow - quarter
90x290x190mm
Code 30-04 / 10-02



'H' block
390x290x190mm
Code 30-48



Closed end
390x290x190mm
Code 30-41



Clean out stretcher
390x290x190mm
Code 30-45

Colours displayed in this brochure are to be used as a guide only. Colours are as close as printing process will allow. Displays in store may vary to actual colour due to batch variations. Obtain samples from Baines Masonry for current batch colour. Care should be taken to order sufficient products to complete job at one time to avoid batch variation. Surplus blocks are not returnable. No claims after seven (7) days or once products have been incorporated in construction.

Refer to Evaluation and Installation Guide or website for specifications.
Check with your local Council to ensure all local building codes are complied with.

Betta Block® is a registered trademark of Baines Masonry and is used under licence.
Please see our full terms and conditions on our website www.bainesmasonry.com.au

Concrete Masonry Units manufactured by Baines Masonry are manufactured to AS/NZS4455.1 Masonry Units and Segmental Pavers and tested to AS/NZS4456 Masonry Units and Segmental Pavers/: Method of Test.

Member of



BAINES MASONRY
900 Wilton Road (P.O. Box 89) Appin NSW 2560
Tel: (02) 4631 1383 Fax: (02) 4631 1402
info@bainesmasonry.com.au
www.bainesmasonry.com.au