



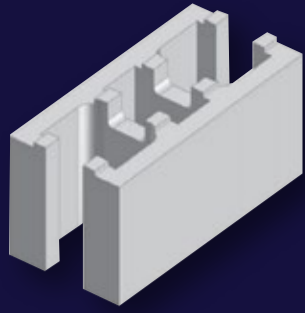
Retaining Wall System
LOCKBLOCKS® WALL SYSTEM



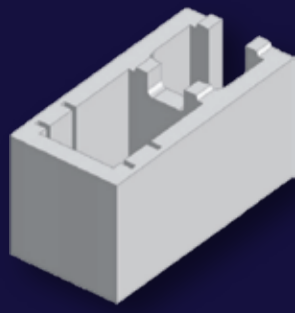
**BAINES
MASONRY**
Quality First

Australian Owned, Designed & Manufactured

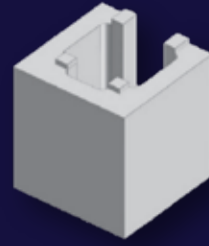
Product Information: LockBlock® Wall System



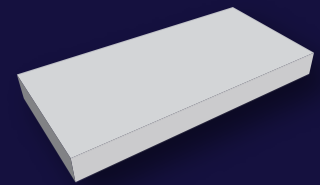
Full Block
398mm x 198mm x 190mm
12.83 kg each
90 per pallet
Code LB 20-91



Full Corner / End Block
290mm x 198mm x 190mm
12.06 kg each
90 per pallet
Code LB 20-92



Half Corner / Half Block
190mm x 198mm x 190mm
6.72 kg each
180 per pallet
Code LB 20-93



195mm Cap
390mm x 195mm x 40mm
5.56 kg each
288 per pallet
Code 50-31

As a mortar-less interlocking block system they are quicker and easier to erect - perfect for a DIY project. Use LockBlock as a stronger and lighter alternative to standard masonry. Their sleek finish complements various designs - enquire about LockBlock today!

- ✓ Retaining Walls
- ✓ Front Fences
- ✓ Privacy Walls
- ✓ Dividing Walls
- ✓ Landscaping Walls

Adhesive Bead Placement

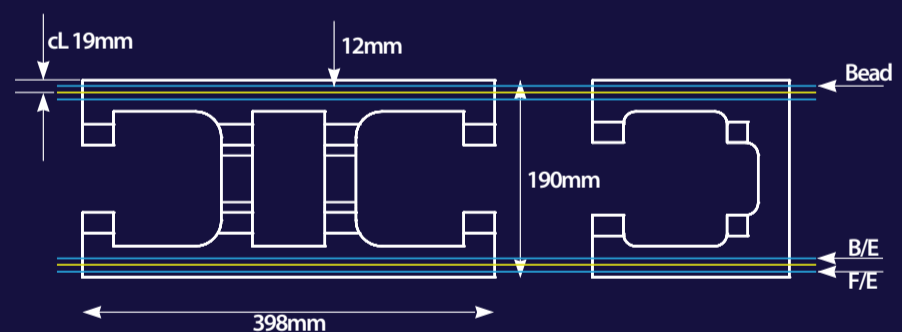
SRW Rapid-Set polyurethane adhesive is specially formulated for construction and landscape projects needing a fast set-up time. This adhesive has proven to be a premier choice, providing a fast, but permanent bond in 60-90 minutes. It can be used on almost any material, even damp and non-porous surfaces.

Directions

1. Make sure the surface is clear of any materials that may prevent adequate adhesion like frost, water, dust, and other contaminants.
2. Cut the tip on slant for 6mm to 10mm bead and puncture inner seal.
3. Using caulking gun, apply the adhesive to one of the surfaces.
4. Press surfaces firmly together with a slight twisting motion.

User Tips

1. Not for continuous submersion or use below the waterline.
2. When using on non-porous materials like foam, metal, etc., apply a light mist of water during application to speed curing.
3. Cure times vary depending on humidity, porosity, temperature, and materials bonded together.
4. Not intended for direct contact with flames or fire brick.



B/E = Back Edge of Expanded Bead Bead = Centreline of Bead should be 19mm from outer edge on 190mm blocks
F/E = Front Edge of Expanded Bead

Cleanup

Uncured adhesive may be cleaned with mineral spirits. Dispose of contents and container to hazardous or special waste collection points.

Colours displayed in this brochure are to be used as a guide only. Colours are as close as printing process will allow. Displays in store may vary to actual colour due to batch variations. Obtain samples from Baines Masonry for current batch colour. Care should be taken to order sufficient products to complete job at one time to avoid batch variation. Surplus blocks are not returnable. No claims after seven (7) days or once products have been incorporated in construction.

Refer to Evaluation and Installation Guide or website for specifications.
Check with your local Council to ensure all local building codes are complied with.

LockBlock® is a registered trade mark of Baines Masonry and is used under licence.
Please see our full terms and conditions on our website www.bainesmasonry.com.au

Member of



BAINES MASONRY
900 Wilton Road (P.O. Box 89) Appin NSW 2560
Tel: (02) 4631 1383 Fax: (02) 4631 1402
info@bainesmasonry.com.au
www.bainesmasonry.com.au