



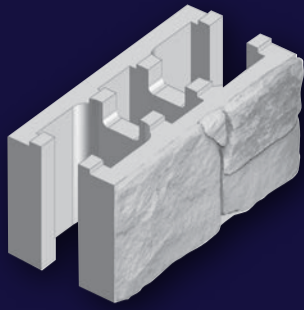
Designer Masonry
STONEFACE® WALL SYSTEM



**BAINES
MASONRY**
Quality First

Australian Owned, Designed & Manufactured

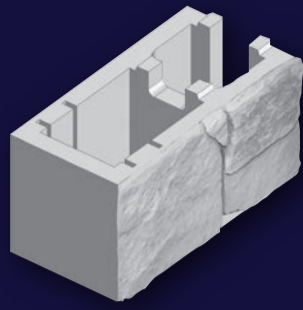
Product Information: StoneFace® Wall System



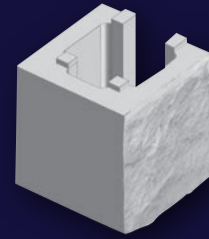
FULL BLOCK
1 Face
398x230x198mm
Code: LB/SF 20-91



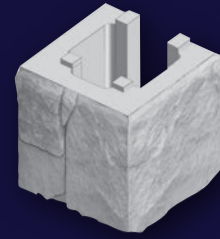
FULL DOUBLE FACE CORNER
1 Face + 1 End
420mmx230mmx198mm
Code: LB/SFD 20-92



FULL END BLOCK
1 Face
390x230x198mm
Code: LB/SF 20-92



HALF BLOCK
1 Face
190x230x198mm
Code: LB/SF 20-93



HALF DOUBLE FACE CORNER
1 Face + 1 End
190x230x198mm
Code: LB/SFD 20-93

Cap
1 Piece
500x300x40mm
Code: SF Capping



Note: Full Corners and Half Corners are universal. No right hand and left hand corners required. Other configurations available on request. Patterns are randomly supplied.

Inspired by the unique Australian landscape, both rugged and beautiful, this reconstituted stone finish retaining block is available in four colour blends and twelve random stone patterns.

StoneFace® Blends



Bushrock



Charcoal



Yellowrock

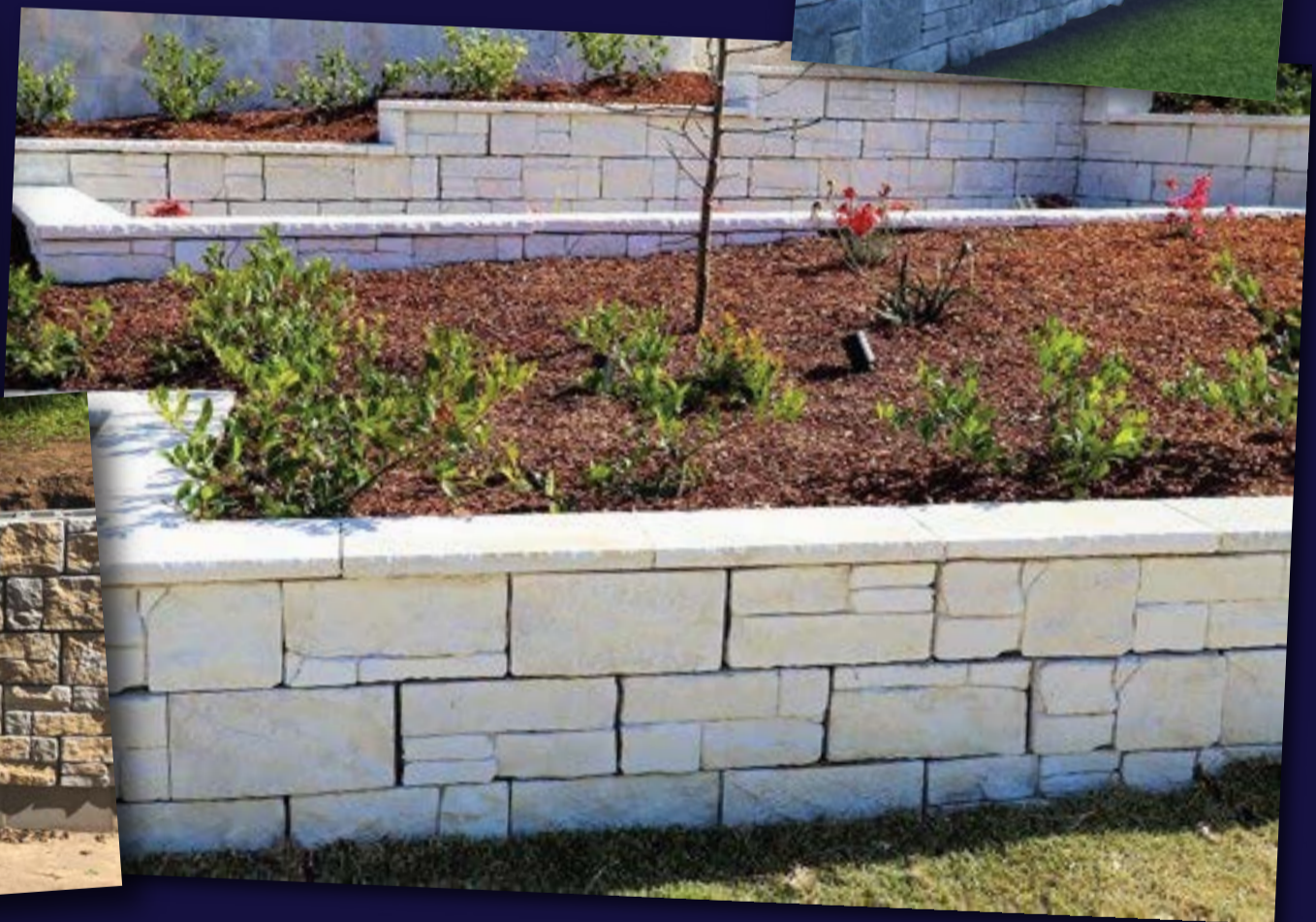


Opalrock



Innovative feature wall system suitable for:

- ✓ Feature Walls
- ✓ Retaining Walls
- ✓ Fences & Boundary Walls
- ✓ Thin Bed Mortar System
- ✓ Structural & Non-structural



Colours displayed in this brochure are to be used as a guide only. Colours are as close as printing process will allow. Displays in store may vary to actual colour due to batch variations. Obtain samples from Baines Masonry for current batch colour. Care should be taken to order sufficient products to complete job at one time to avoid batch variation. Surplus blocks are not returnable. No claims after seven (7) days or once products have been incorporated in construction.

Refer to Evaluation and Installation Guide or website for specifications.
Check with your local Council to ensure all local building codes are complied with.

StoneFace® is a registered trade mark of Baines Masonry and is used under licence.
Please see our full terms and conditions on our website www.bainesmasonry.com.au

Member of



BAINES MASONRY
900 Wilton Road (P.O. Box 89) Appin NSW 2560
Tel: (02) 4631 1383 Fax: (02) 4631 1402
info@bainesmasonry.com.au
www.bainesmasonry.com.au